



Instructional Lessons and Activities Built for and by Educational Professionals

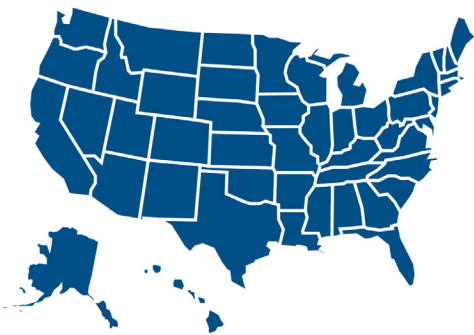
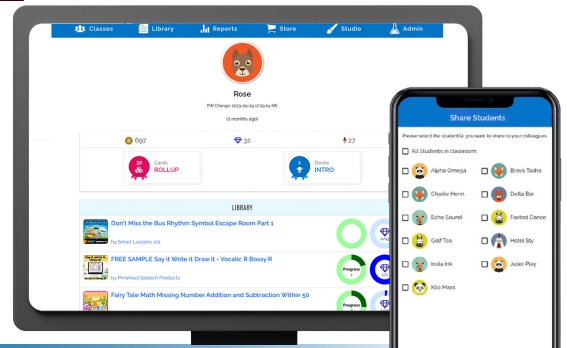


Boom Passport, a Boom product, offers teachers and related service professionals access to over 60,000+ interactive learning activities vetted for evidence-based pedagogy and accessibility features. With Boom Passport, educators can provide their students with age-respectful supplemental lessons designed to meet their cognitive needs.

Boom Passport is an adaptive supplemental curriculum focusing on English-Language Arts, Math, Science, Social Studies, History, Related Services, Transition, and many more areas of instruction!

Keep the Team Engaged

Any Boom Passport teacher within the district can share lessons, data, and students with their intervention team to ensure constant communication about their students' growth. Simply identify the teacher you wish to share the data, students, or lessons with and grant them access!



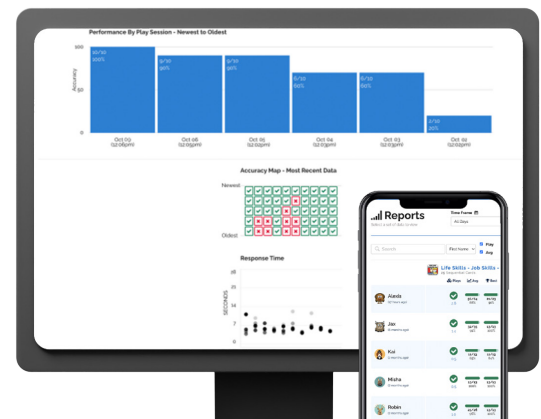
Standards-based Alignments

Coming Soon!

Coming for the '24-25 school year, Boom Passport and Boom Cards will have the ability to be aligned with the Common Core Standards. With the Boom alignment tool, teachers can see what standards are tied each lesson to ensure they are providing grade-level standards-based instruction.

Data for Growth

Boom Passport accounts come with built-in live data collection tools so educators can track their students in real time, making it perfect for IEP monitoring. With a built-in, self-grading function, educators can easily track student progress. Boom Passport includes appropriate lessons and activities for students with special needs, ranging from resource-level students to students with complex needs.



Boom Studio

Build your own lessons! Educators can build *unlimited* lessons or activities to meet the unique needs of all their students with sounds, videos, and images. Once created, educators can share their decks with any other Boom Passport user within their school district!

INK: Students and educators can “write” directly on Boom Cards

VOICE MEMO: Students can record themselves and play back their recording to practice pronunciation, fluency, social engagement, and public speaking.

DRAG-AND-DROP: Drag answers, images, or characters to locations to have students show knowledge

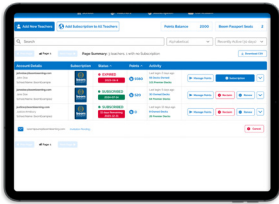
FILL-IN-THE-BLANK: Have the student type answers to questions or provide their personal responses

MULTIPLE CHOICE: From errorless choice to complex multiple-choice answers

CHAIN IMAGES: Layer images to create stop-motion animations or reveal step-by-step processes

VIDEO AND AUDIO: Teach with multimedia supports or include audio instructions for non-readers

ANIMATED GIFS: Use animated GIFS to engage students and help focus their attention



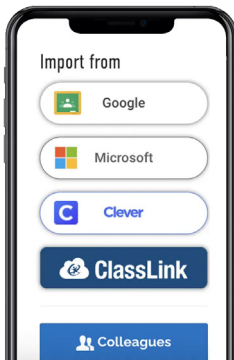
Administrator Access

Boom Passport allows the school or district administrator to view teacher usage data and assign licenses to their educators. Admins can give educators access to the Boom Store.



Boom Store

With administrator approval, teachers still have access to the Boom Store. There, they can purchase even more educational content, with over 500,000+ decks to choose from.



Technology Requirements and Integrations

Boom ensures that all lessons are device agnostic. Teachers and students can interact with their Boom Cards using any web-based device, from a phone to a tablet to an interactive whiteboard. Boom supports single sign-on and rostering with the following services: Google, Canvas, Clever, Microsoft, and ClassLink.

SAML integrations available upon request with a minimum purchase.



All Boom Passport accounts come with the ability to launch a Boom Live session for any activity. Boom Live enables collaboration within a Boom Deck—multiple users can play together. With Boom Live, educators and therapists can work with their students individually or in a group setting, whether they are in person or virtual.

PRICING

All of this is available for only \$299 per educator for an annual subscription. Volume discounts are available. Please call 833-WOW-BOOM (833-969-2666) or contact us at sales@boomlearning.com.